



# Migrating to Islandora

Upper Midwest Digital Collections  
Conference

August 19th, 2014



# Outline

- Introduction to Islandora
- Why Islandora?
- Islandora functionality and live demonstration
- Migration process and experience
- Getting ready to step through the Arch
- What we learned
- Contact us





PALS Digital Repository  
*your library solutions partner*

- PALS – a program of the Minnesota State Colleges and Universities since 1978
- Experienced knowledgeable staff: servers, programming, training, support
- Open Source software fits our mission
- Islandora



# PALS Islandora services

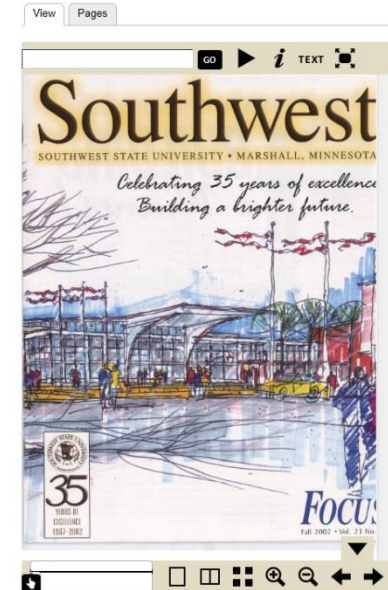
- Host server and application
- Assist with planning repository and metadata
- Create customized ingest forms
- Training and Support



We'll help you go from this . . .



to this!





Hosting and supporting repositories for

- Minnesota State University, Mankato
- Southwest Minnesota State University
- The College of St. Scholastica





- Born at the University of Prince Edward Island
- Islandora makes it possible to create and edit metadata, discover, view, and manage repository assets
- Balance between extensibility and usability
  - ✓ Out of the box support for collections
  - ✓ Architecture that lends itself to customization

# Islandora

## Open Source Community

- UPEI
- Discovery Garden
- Islandora Foundation
- Google Group
- Interest Groups
- Camps and conferences







# Core Components

- Best practice open source software
- Powerful
- Popular, widely used
- Very stable



Drupal



# Quick Overview of our Digitization Experience

- Began working with MDL in 2000
- Started
  - Digitizing photos in 2006
  - Digitizing student magazine and newspaper in 2010
  - Providing Access to Oral Histories in 2012
- Access
  - Via University Archives Digital Collections via CONTENTdm
  - Minnesota Digital Library (some items)



Old Main with fence, Mankato State Normal School, 1857

# Making the Switch to Islandora



A photograph of the construction on Memorial Library addition; Unidentified workers on building; Mankato State University, 1991.

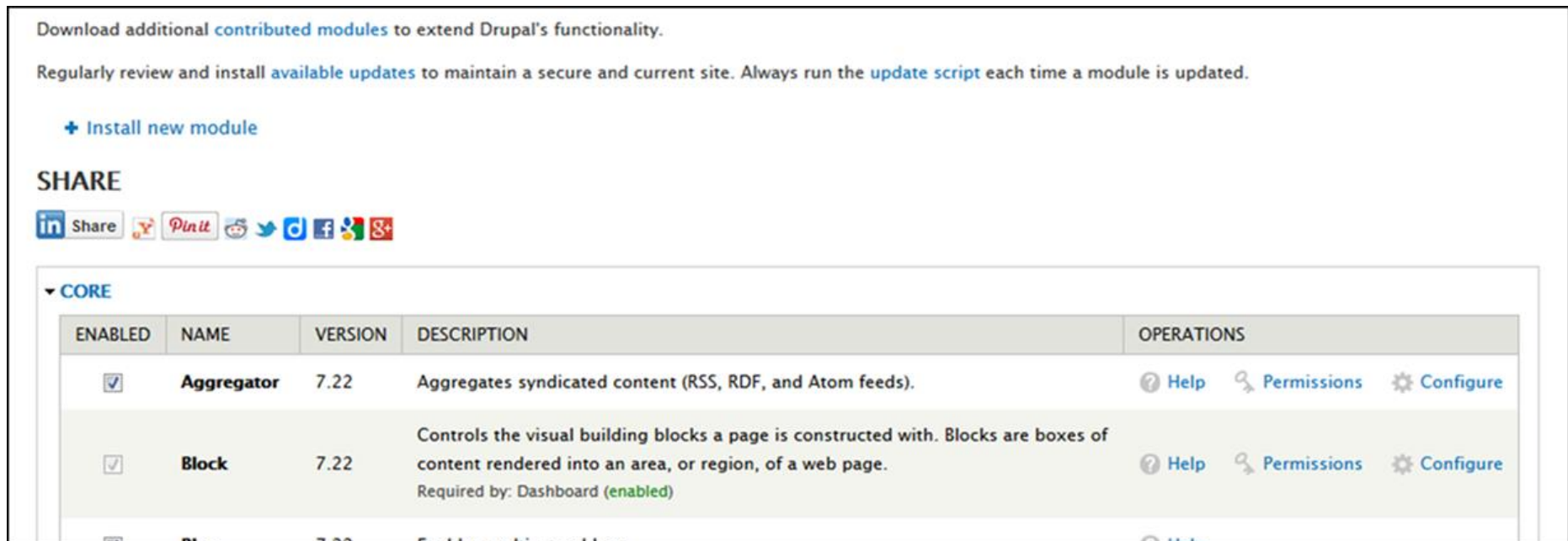
- Increased emphasis on digitization efforts @ MSU
  - Archivist back to full time
  - New Librarian
  - New staff member
- Focus on Institutional Repository
  - Vendor demos
- CONTENTdm Level maxing out
  - Looking @ big financial investment

# Making a Change

- CONTENTdm
  - Online help/documentation was often frustrating
  - Hosted by MSU
    - Great Library IT support but ...
      - Upgrade issues
      - Storage issues
      - Not always a high priority
      - Didn't know the front end of software
    - Customization options limited
  - Cost of upgrade and AMF were not small
  - Project client on each computer
- Islandora by PALS
  - Support from people we know and trust
  - Hosted by PALS
    - Secure digital storage
    - Know the front and back end of software
    - We are a priority
    - They handle upgrades
    - Lots of customization options
  - Costs are clear and we think we are getting more for our money
  - Web based ingest form



- Add Modules or Themes from Drupal.org based on your needs



# Solution Packs



Automatic processes generate derivatives, or “datastreams”

Add original TIFF image, you get...



MODS Record

Dublin Core Record

Technical metadata

JP2

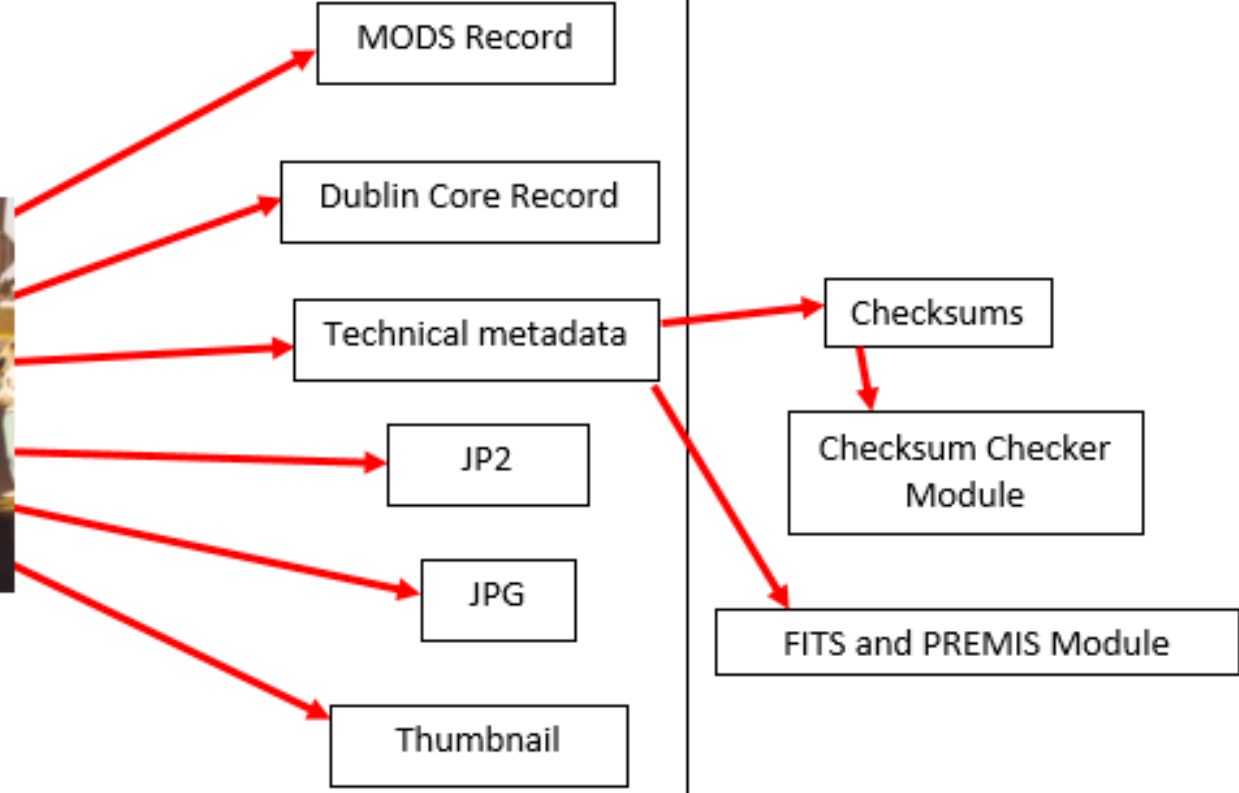
JPG

Thumbnail

Checksums

Checksum Checker  
Module

FITS and PREMIS Module



# Batch Ingest Options



## + Batch Import Objects

- Automatic processes also occur during batch ingest
- Batch ingest through Fedora repository or web interface

MSU Photograph Collection 

[Home](#) » [Islandora Repository](#) » [Arch: University Archives Digital Collections \(TEST\)](#)

**Importer**

ZIP File Importer ▼

Select which importer to use.





# Metadata



- Islandora makes metadata *entry* easy
- Any metadata standard can be used
- Take advantage of controlled vocabulary drop down lists, default text, and custom instructions on ingest forms



# Demo Links

- <http://Islandora.mnpals.net/smsu>
- <http://Islandora.mnpals.net/test>
- <http://arch.lib.mnsu.edu>



# Migration – the process

- Input tiff images and tab delimited metadata
- Studied MDL metadata
- Created ingest form first
- Wrote PHP script for metadata conversion
- Test 1, then 5, then 25, then more
- Found limit to HTTP file transfer
- Writing script for ingesting large batches

# Migration – the metadata script

- Read tab-delimited file
- Create XML file with MODS metadata
- Standardize date field (yyyy-mm-dd)
- Did not migrate technical metadata
- Check if field not blank
- Constant data – contributing organization, scan center, rights statement

```
<?xml version="1.0"?>
<mods xmlns="http://www.loc.gov/mods/v3" xmlns:mods="http://www.w3.org/1999/xlink">
  <titleInfo>
    <title>Class held outside Armstrong and Nelson Hall - M
  </titleInfo>
  <relatedItem type="original">
    <titleInfo>
      <title>msul10837.tif</title>
    </titleInfo>
  </relatedItem>
  <identifier type="local">MSU-UA-309-10837</identifier>
  <identifier type="MDL">msul10837</identifier>
  <name type="contrib org">
    <namePart>University Archives and Southern Minnesota Hi
      nkato, MN 56002-8419</namePart>
  </role>
```

# Migration – the ingest script

- Uncompress compressed tiffs
- Create derivatives and datastreams
- Create Fedora objects



# Migration – the experience

- Many date variations (MSU cleaned up)
- Titles too long (max 255 chars)
- XML illegal chars (& < >)
- Missing images
- Compressed tiffs

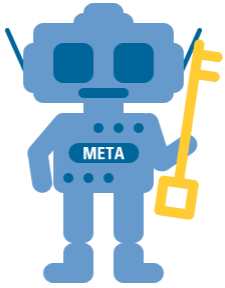


# Migration: We're on our Way

- Project Planning
  - Get on same page
  - Expectations
    - Timelines
    - Look and Feel
- Metadata
- Steps to Migration
- Looking Forward



Three females in a canoe in Highland Arena Pool at Mankato State College, 1968



# MSU Metadata Expectations

- Customizable to fit our Needs
- Adhere to MDL Minnesota Reflections Metadata Entry Guidelines
  - Descriptive Metadata
  - Administrative/Technical Metadata
- Allow for Constant Data and Controlled Vocabulary
- Ability to Export Metadata to MDL



# PALS/Islandora Metadata



- Fully Customized to fit our Needs
- Fully Adhere to MDL Minnesota Reflections Metadata Entry Guidelines
  - Metadata Crosswalk = Map Dublin Core to MODS/METS for Descriptive Metadata
  - Administrative and Technical Metadata via Islandora FITS, PREMIS and Checksum modules
- Constant Data and Controlled Vocab for Easy Metadata Entry
- Two Metadata Records = Brief Dublin Core and Full MODS (Easy to export to MDL)

# Metadata Key Messages

- Evaluate and Clean up your Metadata before you Migrate
- Controlled Vocabulary and Constant Data make Entry Easier
- Have Outsiders Review your Metadata and Process for Creation of Metadata
- Set up a Process to Review Metadata and the Process of Metadata Creation
- Importance of Digital Preservation



# Migration



- Amount of time required
  - (30+ hours/2 people)
- Fields we cleaned up
  - Date formatting
  - Subject headings
  - Spelling errors

# Preparation for ARCH

- Learning the Ingest process
  - New lingo & structure
- Form review & suggestions
  - Ask!
  - 2 separate forms
  - Customize for our needs
    - Default vocabulary
    - Controlled vocabulary



SUBJECT

Locally Assigned Subject Headings \*

[Click here](#) to display choices. Enter information about people, organizations, events, or themes in the following format: last name, first name, middle initial, life dates. Capitalize the first word of the su

Select the local subject heading

- Abraham Lincoln Statue
- Academic Computer Center
- Academic libraries
- Administration

# Migration Adjustments



- Workflow
- Customized ingest forms
- Addressing migration problems as opportunities
  - Character limits to title fields

# Next Steps/Moving Forward

- Documentation
- Training
  - Individual accounts to optimize each worker's ability
- Modifying/honing training guides



# New Physical Workspace



- Staffing
- Much smaller to include face time/increased interaction with each worker
- All scanners in one area
- Web-based rather than work-station based

# ARCH Coming Soon!

The screenshot shows the ARCH website interface. At the top left is the ARCH logo, which includes a stylized archway icon and the text 'ARCH'. Below this is the text 'MINNESOTA STATE UNIVERSITY MANKATO' and 'University Archives Digital Collections'. A navigation bar contains a search box, 'Advanced Search', and links for 'ARCH Home', 'Browse Collections', 'About', and 'Archives Home'. A left sidebar lists navigation options: 'Browse' (with sub-links for Year, Subject, Colection, Type of Material), 'Search ARCH', 'Cornerstone : A Collection of Scholarly and Creative Works', 'About', 'Contact Us', 'Library Services', and 'MSU Home'. Below these are social media icons for Facebook, Twitter, YouTube, and a plus sign. The main content area features a central text box stating 'ARCH contains select digital materials from the University Archives and Southern Minnesota Historical Center. Visit the Archives home to explore other collections.' To the right of this text is a photograph of two people at a computer workstation. Below the text box is a 'Collections' section with a yellow header and a list item 'Photographs'. To the right of the 'Collections' section is a 'Recently Added' section with a yellow header, listing five items: 'Blakeslee Field - Mankato State College; Mankato State University', 'Mens Basketball - Mankato State College', 'Mens Basketball Trophy', 'Mens Basketball - Mankato State College', and 'Mens Basketball - Mankato State College'. Each item has a small thumbnail image. At the bottom of the page, there are links for 'Contact Us', 'Using our Content', 'Library Services', and 'MSU Home', along with the text 'Developed by PALS'.

**ARCH**  
MINNESOTA STATE UNIVERSITY MANKATO  
University Archives Digital Collections

search Advanced Search ARCH Home Browse Collections About Archives Home

Browse  
Year  
Subject  
Colection  
Type of Material  
Search ARCH  
Cornerstone : A  
Collection of Scholarly  
and Creative Works

About  
Contact Us

Library Services  
MSU Home

[f](#) [t](#) [y](#) [+](#)

**ARCH** contains select digital materials from the University Archives and Southern Minnesota Historical Center. Visit the [Archives home](#) to explore other collections.

**Collections**

- Photographs

**Recently Added**

- Blakeslee Field - Mankato State College; Mankato State University
- Mens Basketball - Mankato State College
- Mens Basketball Trophy
- Mens Basketball - Mankato State College
- Mens Basketball - Mankato State College

Contact Us Using our Content Library Services MSU Home Developed by PALS



# What we have learned

- Know your data
- Standardization makes things easier
- Planning pays off
- Metadata is important
- Variety of test data smooths the way



# What is important

- Data cleanup
- Communication
- Flexibility
- Training and clear documentation early
- Choose appropriate tools
- Track other sites, community activity





hosted  
by



Check it out at

[islandora.mnpals.net](http://islandora.mnpals.net)  
[arch.lib.mnsu.edu](http://arch.lib.mnsu.edu)



Questions and Discussion